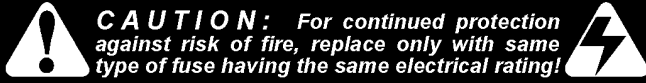


Backbox PCB Fuses, ROMs, Bridges, Relays, P/F & Cabinet Fuses, Cab. Switches



QUICK REFERENCE FUSE CHART

Backbox Fuses

LOC: DISPLAY POWER SUPPLY (P.S.) BOARD

F1	¼A 250v S.B.	90v DC	High Voltage Display
----	--------------	--------	----------------------

LOC: I / O POWER DRIVER BOARD

F6	7A 250v S.B.	50v DC	Primary High Power Coils/Flippers
F7	5A 250v S.B.	20v DC	Low Power Coils
F8	5A 250v S.B.	12v DC	Logic Power
F9	5A 250v S.B.	12v DC	Logic Power
F20	4A 250v S.B.	50v DC	Magnets
F21	3A 250v S.B.	50v DC	Coils
F22	8A 250v S.B.	18v DC	Controlled Lamps
F23	4A 250v S.B.	5v DC	Logic
F24	5A 250v S.B.	6.3v AC	G.I. Lamps (BRN-WHT↔WHT-BRN)
F25	5A 250v S.B.	6.3v AC	G.I. Lamps (YEL↔WHT-YEL)
F26	5A 250v S.B.	6.3v AC	G.I. Lamps (GRN↔WHT-GRN)
F27	5A 250v S.B.	6.3v AC	G.I. Lamps (VIO↔WHT-VIO)
F28	3A 250v S.B.	24v AC	Not Used / Spare

Cabinet Fuses

LOC: SERVICE (AC) OUTLET BOX (Cabinet Bottom)

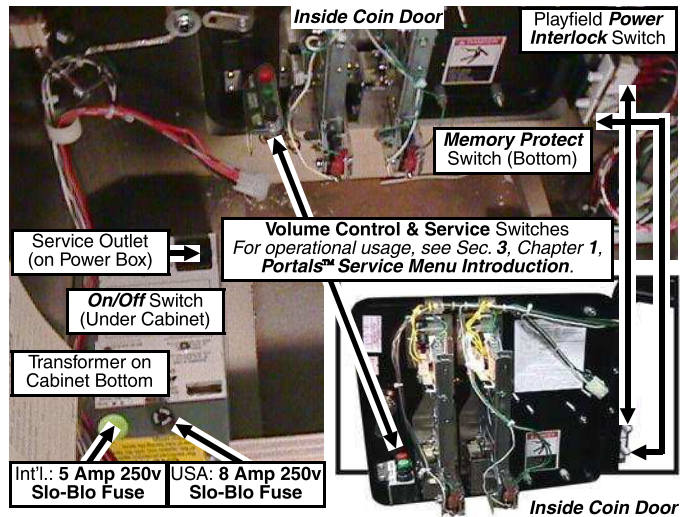
n/a	8A 250v S.B.	115v AC	Main Fuse Line (Domestic or USA)
n/a	5A 250v S.B.	220v AC	Main Fuse Line (International)

Playfield (P/F) Fuses

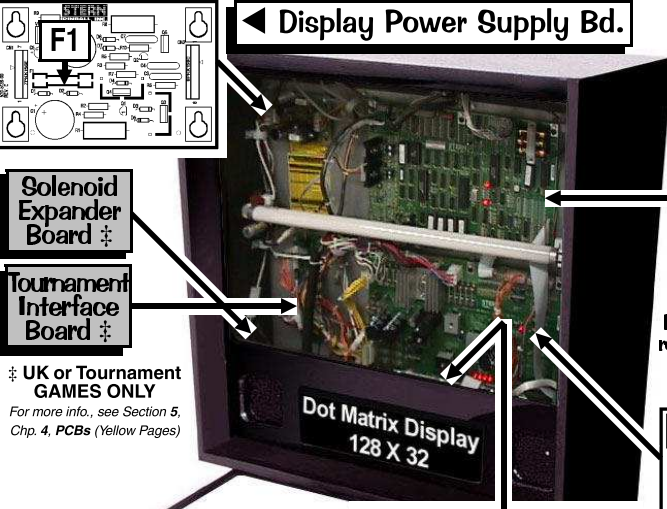
LOC: UNDER PLAYFIELD (near the assembly)

n/a	3A 250v S.B.	50v DC	Right Flipper (BLU-YEL↔RED-YEL)
n/a	3A 250v S.B.	50v DC	Left Flipper (GRY-YEL↔RED-YEL)
n/a	3A 250v S.B.	50v DC	Up/Dn Car Mech (GRY-GRN↔BLU-BLK)

For locations & more information on fuses, see Sec. 5, Chapter 2.

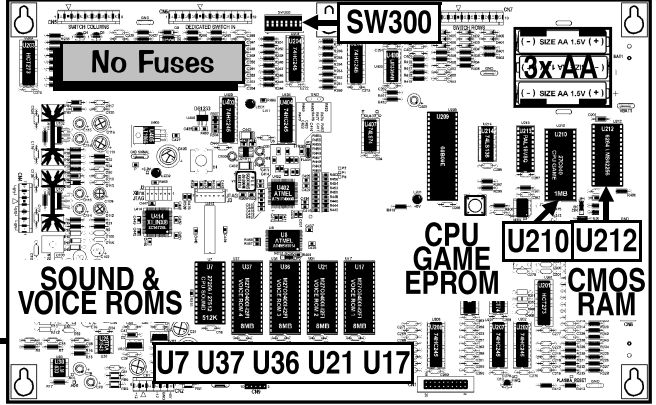
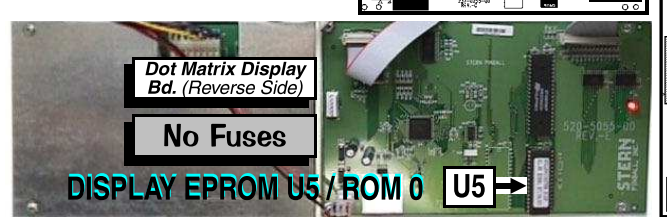


ROM TYPE on BD	LOCATION	SIZE	PART NUMBER
CPU Sound	U7	512K	965-0429-91
CPU Game	U210	1 MB	965-0430-91
CPU Voice ROM 1	U17	8 MB	965-0431-91
CPU Voice ROM 2	U21	8 MB	965-0432-91
CPU Voice ROM 3	U36	8 MB	965-0433-91
CPU Voice ROM 4	U37	8 MB	965-0434-91
DISPLAY Controller	U5	4 MB	965-0435-91



Display Controller Bd.

The Display Controller has the Display EPROM (Location: U5 / ROM 0). This board is located behind the 128 X 32 Dot Matrix Display Board.



For Schematics and/or Component Parts on PC Boards shown on this page, review Section 5, Chapter 4, Printed Circuit Boards (The Yellow Pages).

